

UNITS 1 - 4 PARKEND INDUSTRIAL ESTATE
STORNOWAY
ISLE OF LEWIS
HS2 0AN

TEL: 01851 704973
FAX: 01851 703003
WEB: www.nessglaze.co.uk
EMAIL: enquiries@nessglaze.co.uk



BS 7412

MANUFACTURERS AND INSTALLERS
OF HIGH PERFORMANCE
UPVC WINDOWS AND DOORS



NESSGLAZE LTD

2022 UPVC Window and Door
Specification

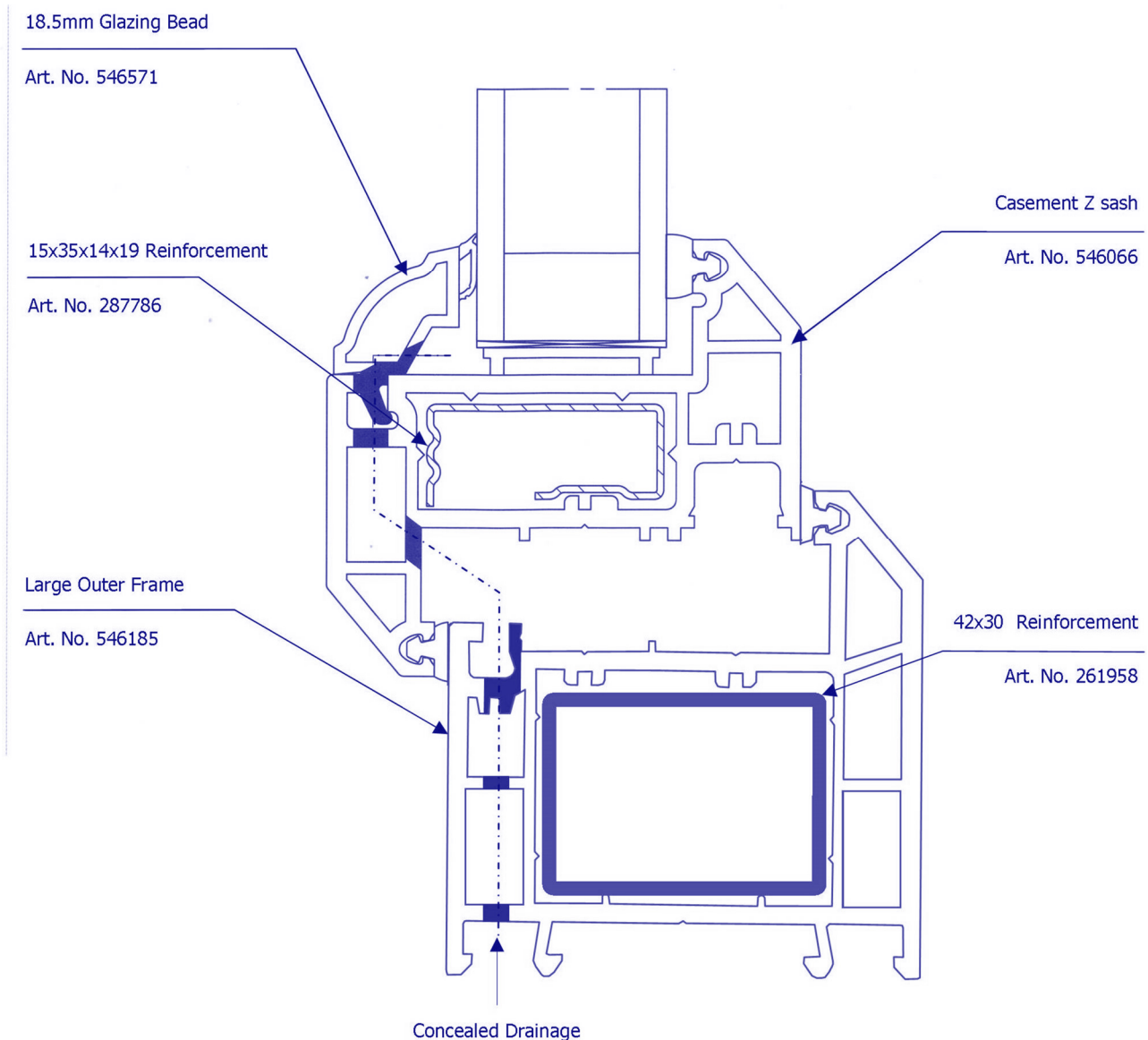


MAIN PROFILE - REHAU S706 I.G.

OUTERFRAME (546180)	CASEMENT SASH (546066)	LARGE MULLION/TRANSOM (546470)
<p>REINFORCING (249848)</p>	<p>REINFORCING (287786)</p>	<p>REINFORCING (287776)</p>
<p>TILT AND TURN SASH (546166)</p>	<p>DOOR LEAF (546625)</p>	<p>DOOR MIDRAIL (546635)</p>
<p>REINFORCING (287779)</p>	<p>REINFORCING (287787/287789)</p>	<p>REINFORCING (287787)</p>

CASEMENT WINDOWS

- Pre-gasketed 72mm Large outer frame;
- Pre-gasketed Z sash;
- Externally beaded with sculptured beads;
- Fully reinforced with galvanised steel for extra strength;
- Security glazing tape fitted;
- 89mm Large Transom;
- Pressure equalized;
- Concealed drainage;
- Trickle vents through sash (Glazpart 3 screw 4000 and 2 screw 2000 fixed vents)
- A2 Austenitic Stainless steel screw fixing.
- Run up blocks (S&S Plastics)
- Locking wedges
- Stainless steel window restrictors (see page 4)

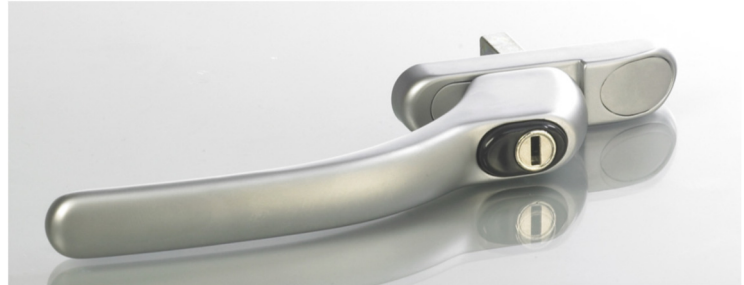


CASEMENT HANDLES

MAKE: FAB & FIX

TYPE: Connoisseur

- Locking handles
- Inline
- High quality zinc cast
- BBA (Report no 2017)



CASEMENT HINGES (ESCAPE)

MAKE: Securistyle Defender Egress

- Austenitic Stainless Steel
- Allows casement windows to comply with Building Regulations Approved Document B for fire escape windows
- 16" hinge opens to a full 90° for emergency exit to comply with BS 5588-1
- Composite slider with stainless steel release lever mechanism allows cleaning access from the inside of the building to comply with BS 8213-1
- Automatically resets to the fire escape mode when the window is closed
- Self lubricating PTFE based coating on end cap provides smooth closing
- Die cast support plate in bottom slider ensures consistent performance



CASEMENT RESTRICTORS

MAKE: SECURISTYLE

- Tested to BS 6375 Part 2 to withstand a force of 600N when opened at the restricted position
- Austenitic 304 stainless steel for enhanced corrosion resistance
- Compatible with Securistyle Domestic Hinges



CASEMENT ESPAGNOLETTE



DEFENDER WINDOW LOCK TYPE
HIGH SECURITY WINDOW LOCKING SYSTEM
BENEFIT
A high security window locking system capable of achieving PAS24 (BS7950)



THE DEFENDER HIGH SECURITY WINDOW LOCK

- **High Security**
 - Designed to meet requirements of BS7950 (now PAS24)
 - Secured by Design (SBD) approved
- **Quick to Fit**
 - A fraction of the time to fit and install compared to shootbolts
 - Cam rotation for simple adjustment of gasket compression
 - No bar cropping
 - No bar adjustment
 - No corner cleaning
 - No extra routing
 - Less components
 - Less screws
 - Minimal stocking
- **Proven Gearbox technology**
- **Greater Resistance to Corrosion**
 - Defender window lock can be fitted anywhere in the UK and is particularly appropriate for coastal areas
 - All steel components are manufactured from a 304 grade* austenitic stainless steel giving a guaranteed BS EN 1670 Class 4 corrosion performance
- **Option of Offset Gearbox**
 - Optional variety of handle heights to accommodate DDA requirements

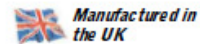
- **12 Year 'No Quibble' Guarantee**
 - Tested to 30,000 cycles of operation
 - Designed and tested to meet BS6375-1 classification for weathertightness



DEFENDER WINDOW LOCK

12
YEAR GUARANTEE*

* Austenitic (was 304) stainless steel to BS EN 10088-2 Grade 1.4301



Due to our policy of continual improvement we reserve the right to alter specifications without notice. It is the responsibility of the window manufacturer to ensure that the finished window meets the required performance and safety specification. All transactions are subject to our standard conditions of supply, which are available on request.

Ref: DWLSD

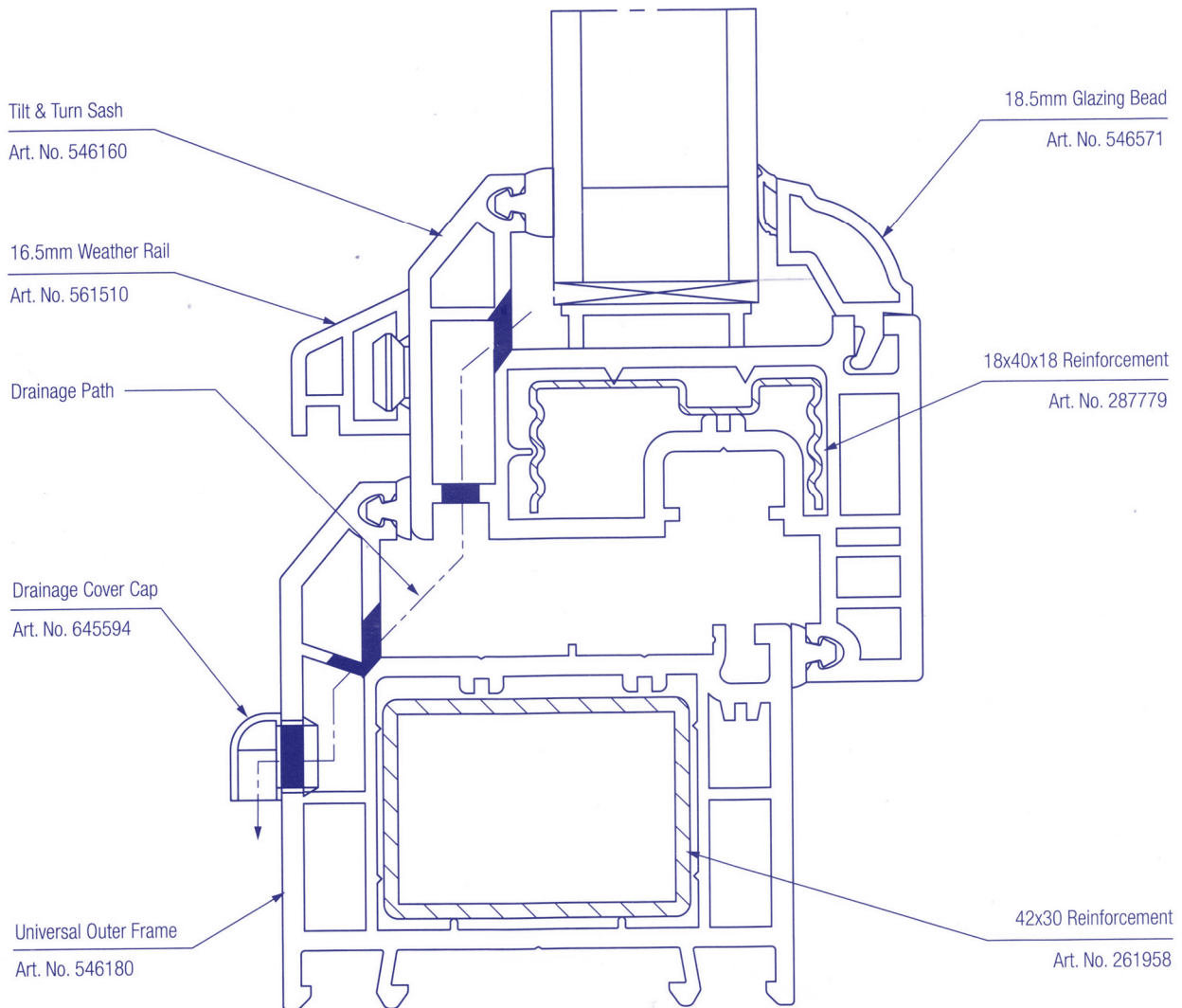
Securistyle
Kingsmead Industrial Estate, Princess Elizabeth Way
Cheltenham, Gloucestershire GL51 7RE, UK

Tel: +44 (0) 1242 221200
Fax: +44 (0) 1242 228194/520828

E-mail: info@securistyle.co.uk
Website: www.securistyle.co.uk

TILT & TURN WINDOWS

- Pre-gasketed 72mm large outer frame;
- Pre-gasketed sash;
- Internally beaded with sculptured beads;
- Fully reinforced;
- 89mm Large Transom;
- Pressure equalized;
- Face drainage;
- Drip bar;
- Trickle vents through sash (Glazpart 4000 and 2000);
- A2 Austenitic Stainless steel screw fixing.



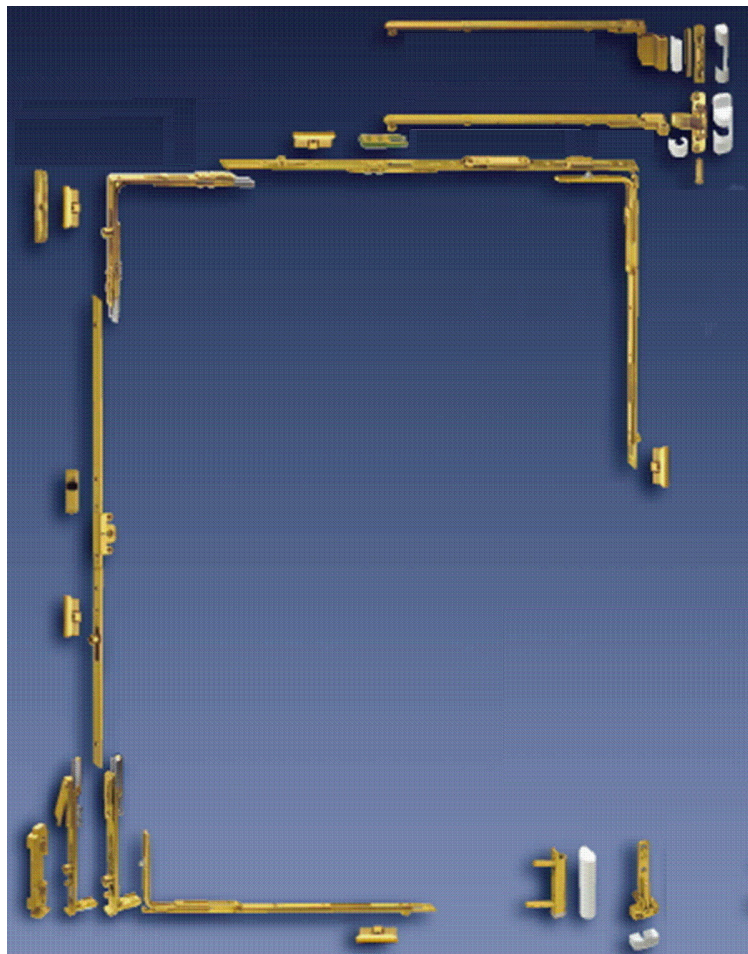
TILT AND TURN HARDWARE

FUHR DK2003M tilt and turn fittings to RAL-RG 607/3

Test Class F100:

Sash weight up to 100 kg

- a) Espagnolette with variable handle height
- b) Espagnolette with fixed handle height
- c) Lockable espagnolette



Tilt and Turn gearing:

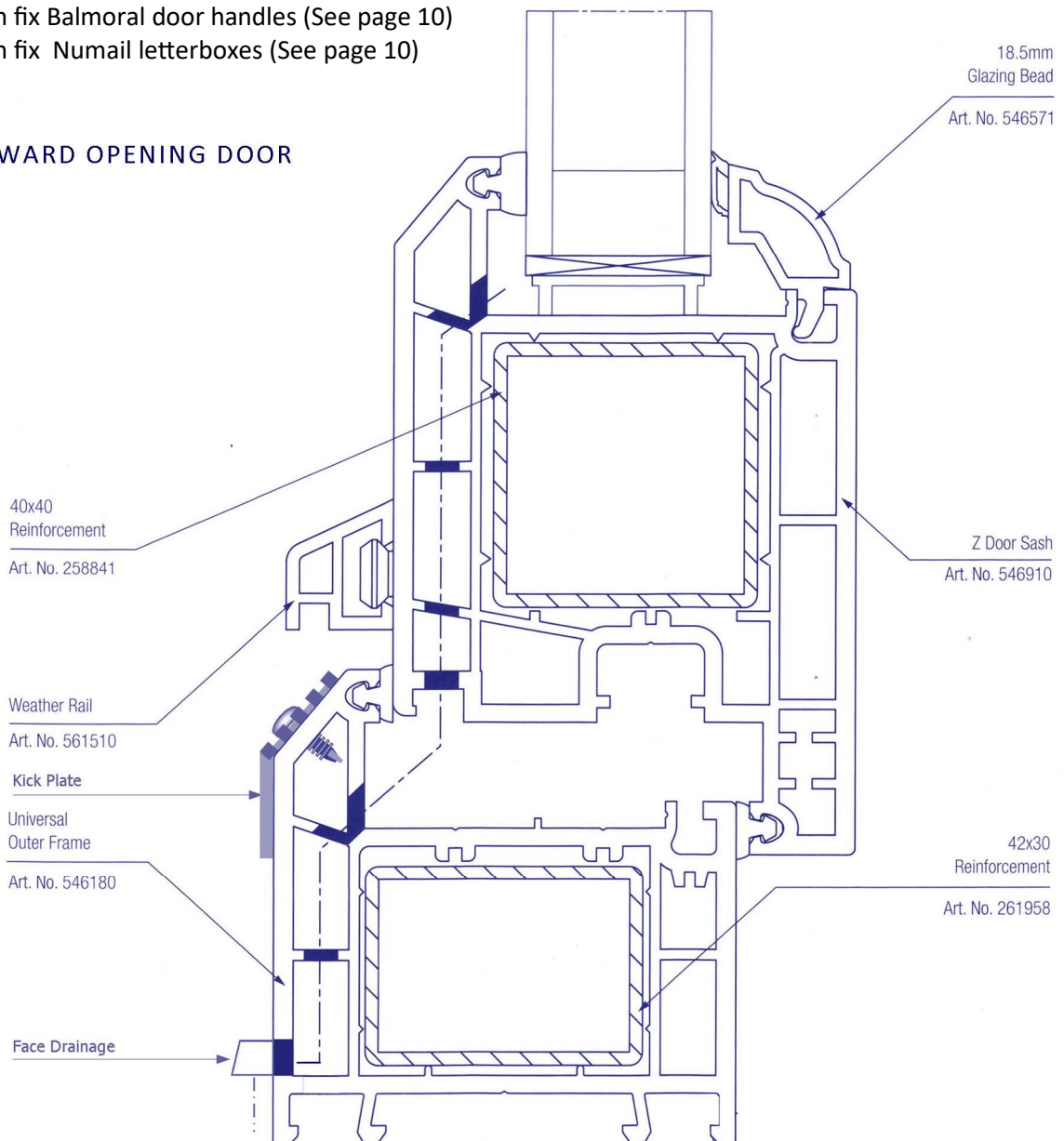
- 16 mm faceplate, for 12 mm chamber
- Adjustable brass rollers,
- Corner units with pre-lubricated
- stainless steel spring strips,
- adjustable stay arms with two stage pull in.
- 3-dimensional corner hinge with vertical,
- lateral and compression adjustment.
- Factory lubricated components for immediate ease of operation.

bichromate galvanized clearance.

DOORS

- Pre-gasketed 72mm large outer frame;
- Pre-gasketed door leaf;
- Internally beaded with sculptured beads;
- Fully reinforced;
- Large midrail, welded rather than mechanically jointed;
- 89mm Large Transom;
- Pressure equalized;
- Face drainage;
- Drip bar;
- Ribbed aluminium threshold kick plate;
- A2 Austenitic Stainless steel screw fixing.
- Door numerals (Classic sign's Easy Space. Self adhesive. Black numeral on silver background)
- Bright chrome spyhole with extension fitted in mullion
- Fab n fix Balmoral door handles (See page 10)
- Fab n fix Numail letterboxes (See page 10)

INWARD OPENING DOOR



DOOR LOCK

MAKE: FUHR

TYPE: 856 TYPE G - Lever Operated - Hook Bolts with Serrations

One piece 16mm wide steel flat faceplate silver bichromate finish 2285mm overall, enclosed zinc plated lockcase to suit lever and profile cylinder, with latch, deadbolt, 2 hook bolts, serrations top and bottom.

Nessglaze Ltd fit 150mm extensions with rollers top and bottom, giving a total of **10 locking points**.

Follower 8mm. Centres 92mm. Handle height 1050mm bolt only, variable, dependant on additional fitments.

- Reversible latch
- Adjustable latch sealing pressure
- Steel Hook Bolt throw 20mm with lockout for strength and security
- Adjustable hook bolt sealing pressure
- Deadbolt throw - 20mm (Backset 35mm)
- Multipoint function provides enhanced noise reduction and heat insulation
- Fitted with 150mm extension with roller top and bottom.



LETTERBOXES

MAKE: YALE PLATINUM PREMIUM

- Marine grade stainless steel
- Includes interior and exterior flaps with telescopic sleeve for extra weather proofing
- Contains insulated brush strip and gaskets
- Sprung - flaps snap shut after opening for extra security and fewer draughts
- Matching handles



DOOR HANDLES

MAKE: YALE PLATINUM PREMIUM

- Marine Grade stainless steel
- Accredited with BSEN 1906:2010 grade 4. (200,000 cycles, 480 hours neutral salt spray exposure)
- Matching letterplates



DOOR CYLINDER

MAKE: ISEO

- 5 pin cylinder
- Locking cam offset in the closed position
- 4 anti-pick pins for added security.
- 17,500 different key combinations, far exceeding security Grade 3 of BSEN1303.



DOOR HINGES

MAKE: BREUER & SCHMITZ

110mm zinc die cast reversible window hinge with stainless steel pin and Delrin bushes. Supplied with eccentric bushes allowing adjustment 1.5mm and stainless steel security screw for outward opening. Weatherfast plastic coated white.

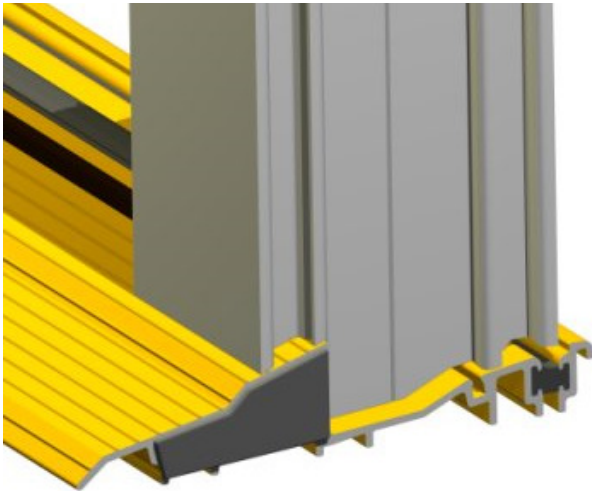
Nessglaze Ltd imports these superior quality hinges direct from the German manufacturer and fit 4 hinges per door - as against the industry standard of 3 hinges.



PART M COMPLIANT LOW THRESHOLD

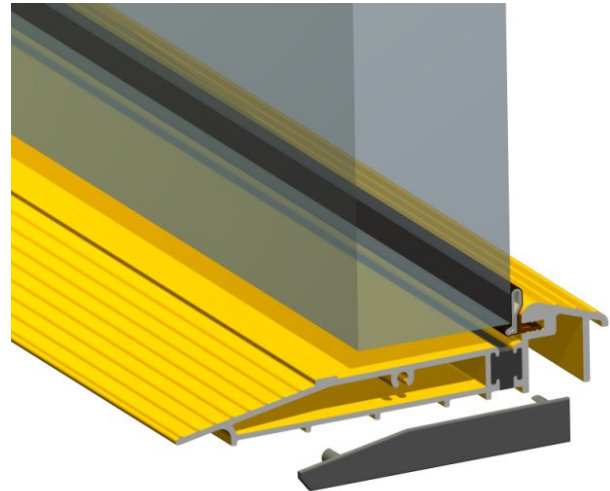
STORMGUARD AM3EX

MOBILITY EASY ACCESS THRESHOLD DOOR SILL
Suitable for inward opening doors



STORMGUARD AM5EX

MOBILITY EASY ACCESS THRESHOLD DOOR SILL
Suitable for outward opening doors



- Suitable for severe weather conditions;
- Easy access;
- Ergonomically tested for Part M compliance;
- Thermally broken to meet thermal bridging and insulation requirements;
- Non-slip surfaces ensure a safe grip in wet conditions.

GLASS

High performance insulating double glazed units made in Scotland to BS EN1279-2/3 standard.

Argon filled with eco glass as standard for excellent levels of energy efficiency.

More heat from the sun is absorbed and retained in the room.



With Warm Edge Black spacer, overall window U-Value is 1.4wm2k

BS 7 4 1 2

In July 2013, Nessglaze Ltd were awarded a BM Trada Q Mark for the Design, Fabrication and Performance of PVCu Windows and Doors (BS7412).

As part of the process, sample windows were independently tested for water tightness, air permeability, wind resistance and hardware endurance.

The test report is available to view on www.nessglaze.co.uk - the results of which were:

Air permeability:

Classes range from 1 to 4, with Class 4 being awarded to the most airtight window. Class 2 at 300pa is considered to be the class for a standard window, with anything above this normally supplied for exceptionally airtight buildings, such as air conditioned buildings. Nessglaze achieved Class 4 of 600pa – the highest possible rating.

Watertightness:

Classes range from 1A/1 B to 9A, with 9A being awarded to the most watertight windows. Class 3A with 100pa is considered to be the class for a standard window. Nessglaze achieved the Class 9A of 600pa - the highest possible rating.

Windload:

Resistance to wind load ranges from Class 1 to Class 5, with Class 4 being Severe Weather Exposure - as required for the Western Isles. Nessglaze windows were tested to more extreme winds than even a Class 5 and achieved a Class AE2400 (2400 pa)

As well as having the windows tested, Nessglaze safely passed a 2 day audit into the factory and office production control systems. As an independent UKAS accredited testing authority BM Trada checked that Nessglaze products demonstrate:

High performance through independent testing against exacting requirements

Consistent manufacture through approved quality management systems

The Q-Mark is regarded as one of the most rigorous certification processes available for construction products. For BS7412, this demands regular testing of weld temperatures as well as weld strength tests.

Quality check milestones throughout the manufacturing process are verified, with hardware checked against current regulations on strength, durability and corrosion resistance. We take great care to ensure components are of the highest quality and not only meet, but exceed requirements on strength and corrosion resistance.



BM TRADA

Results of Test: Chilt/P13091/A/Rev1

Nessglaze Ltd
 Units 1-4 Parkend Industrial Estate
 Stornoway
 Isle of Lewis
 HS2 0AN

This document confirms that performance testing was conducted on 30 May 2013. Testing was conducted to the following standard:-

- BS 6375 Part 1:2009 Performance of windows and doors - Part 1: Classification for weathertightness and guidance on selection and specification. The following results were achieved.

Product tested	Multiight Casement Window		
Summary of testing and classification			
	Test Standard	Classification standard	Result
Air permeability	BS EN 1026: 2000	BS EN 12207: 2000	600Pa (Class 4)
Watertightness	BS EN 1027: 2000	BS EN 12208: 2000	600Pa (Class 9A)
Wind resistance	BS EN 12211: 2000	BS EN 12210: 2000	2400Pa (Class AE2400)
Exposure category		BS 6375: Part 1: 2009	2400

Air leakage at 50pa was 0.0m³/h positive pressure and 0.0m³/h negative pressure. The perimeter length of opening light was 6.71m.

The results relate only to the specimens tested, as detailed in technical specification document number Chilt/P13091/tec1/Rev1

Kyle Morris
 Kyle Morris – Senior Technical Officer
 Date: 5.7.13

Vincent Kerrigan
 Vincent Kerrigan - Technical Manager
 Date: 05.07.2013

Chiltern International Fire Ltd trading as BM TRADA
 Chiltern House, Stocking Lane, Hughtenden Valley, High Wycombe, HP14 4ND, United Kingdom
 Tel: 01494 569800 Fax: 01494 564895
 Web: www.bmtradrugroup.com
 Email: testing@bmtrada.com

Page 1 of 6

BM TRADA

REGISTRATION CERTIFICATE

This is to certify that

Nessglaze Limited
 Units 1-4 Parkend Industrial Estate
 Stornoway
 Isle of Lewis
 Scotland
 HS2 0AN

Meets the requirements of the BM TRADA Q-Mark Window
 General Performance scheme to BS 7412 PVC-U

Kevin Towler
 Kevin Towler
 Director

BM TRADA Certification Ltd, Chiltern House, Stocking Lane, High Wycombe, Buckinghamshire, HP14 4ND, UK

This certificate remains the property of BM TRADA Certification Ltd. The certificate and copies or reproductions of the certificate shall be returned to BM TRADA Certification Ltd or destroyed if requested in writing by BM TRADA Certification Ltd. The validity of the certificate is conditional upon the holder of the certificate notifying BM TRADA Certification Ltd of any change of address or of circumstances.

CE MARKING

As part the BS7412 certification, Nessglaze are fully compliant with CE regulations and are working towards the changeover to UKCA regulations.



NHBC

In achieving BS7412, we meet the standards of the National Housing - Building Council (NHBC)



NESSGLAZE LTD

**UNITS 1 - 4 PARKEND INDUSTRIAL ESTATE
STORNOWAY
ISLE OF LEWIS
HS2 0AN**

TEL: 01851 704973

FAX: 01851 703003

WEB: www.nessglaze.co.uk

EMAIL: enquiries@nessglaze.co.uk